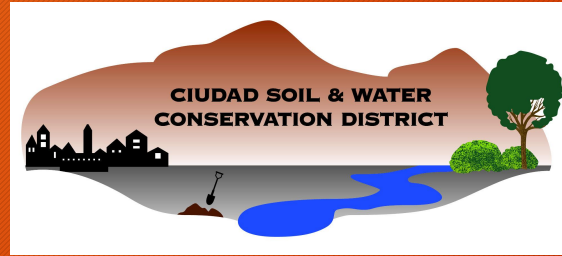


Ciudad Soil and Water Conservation District: East Mountain Forest Health Program



Ricky Reedy

Forest Health Manager

Ciudad Soil and Water Conservation
District

What is Ciudad SWCD?

- 1 of 47 Conservation Districts in NM, of over 3000 in USA
- We're all unique and defined by our location
- 7 Member board, 9 Staff and growing!
- Primarily grant funded (Until Jan 2026)
- Over \$3.5 million in conservation projects on the ground in FY24
- Everything we accomplish is done in partnership!



Ciudad SWCD Programs

-Adult and Youth Education

- RiverXchange, Arroyo Clasroom, NM Envirothon
- Land and Water Summit, Master Naturalists, Rainwater Harvesting, Watershed Stewards

-Agriculture

- Grow the Growers, Healthy Soil Program, Composting

-Watersheds/Wetlands

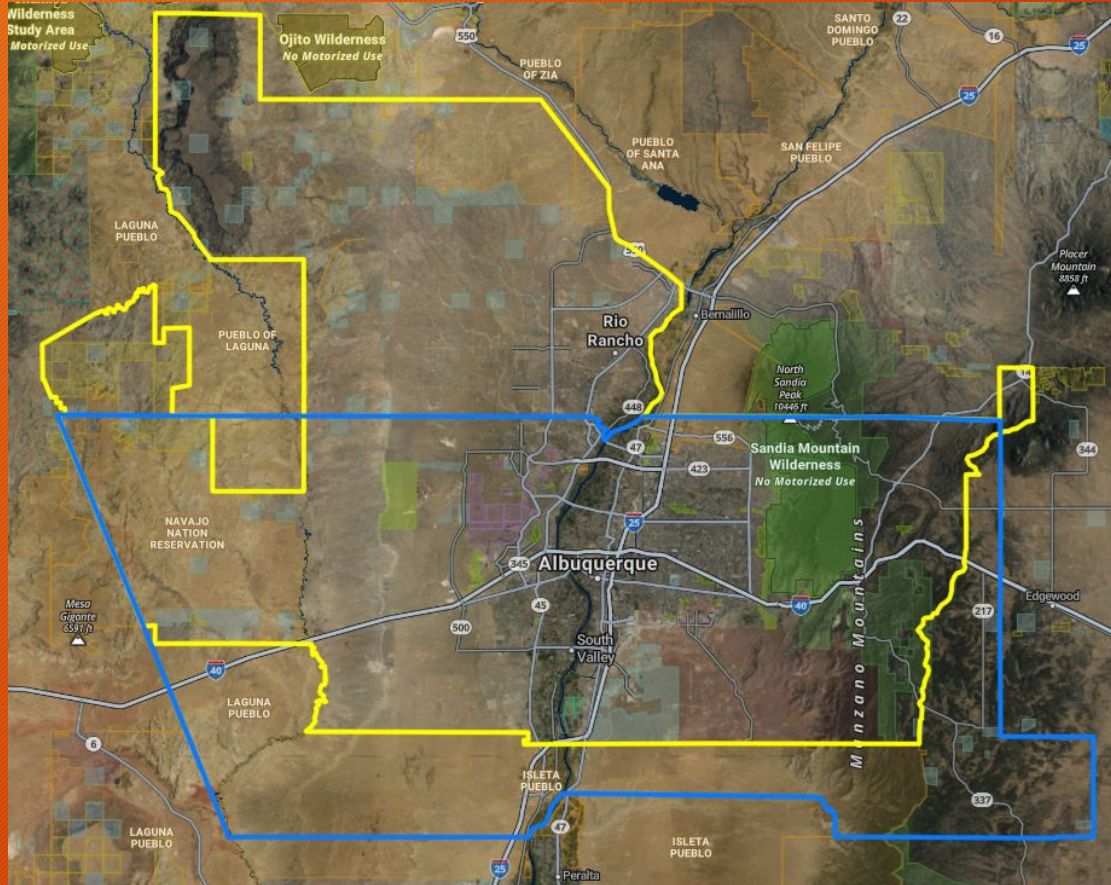
- CNP, TCWRP, Wild Seed Harvesting, Bosque, UW, GSI

Ciudad SWCD: East Mountain Forest Health Program

- Private Land Forest Health Projects
 - 40-70 Acres thinned per year 2022-2024
- Public Land Forest Health Projects
 - ~100-500 Acres thinned per year
- Neighborhood Chipper Events
 - 2-3 EM neighborhoods served per year
- Wildfire Risk Workshops and Presentations
 - 10-20 Events per year
- Green Waste Days
 - 2-Two week events per year
- Reflective House Numbers
 - ~50-200 Address signs produced per year



Where is Ciudad SWCD?



Yellow shape is Ciudad SWCD Boundary.

Blue is Bernalillo County Boundary.

Topics covered:

- What areas are at high risk to wildfire?
- What is Wildland Urban Interface (WUI)
- What is Defensible Space?
- Forest health and Defensible Space actions you can take
- Ciudad SWCD East Mount Forest Health Program Services

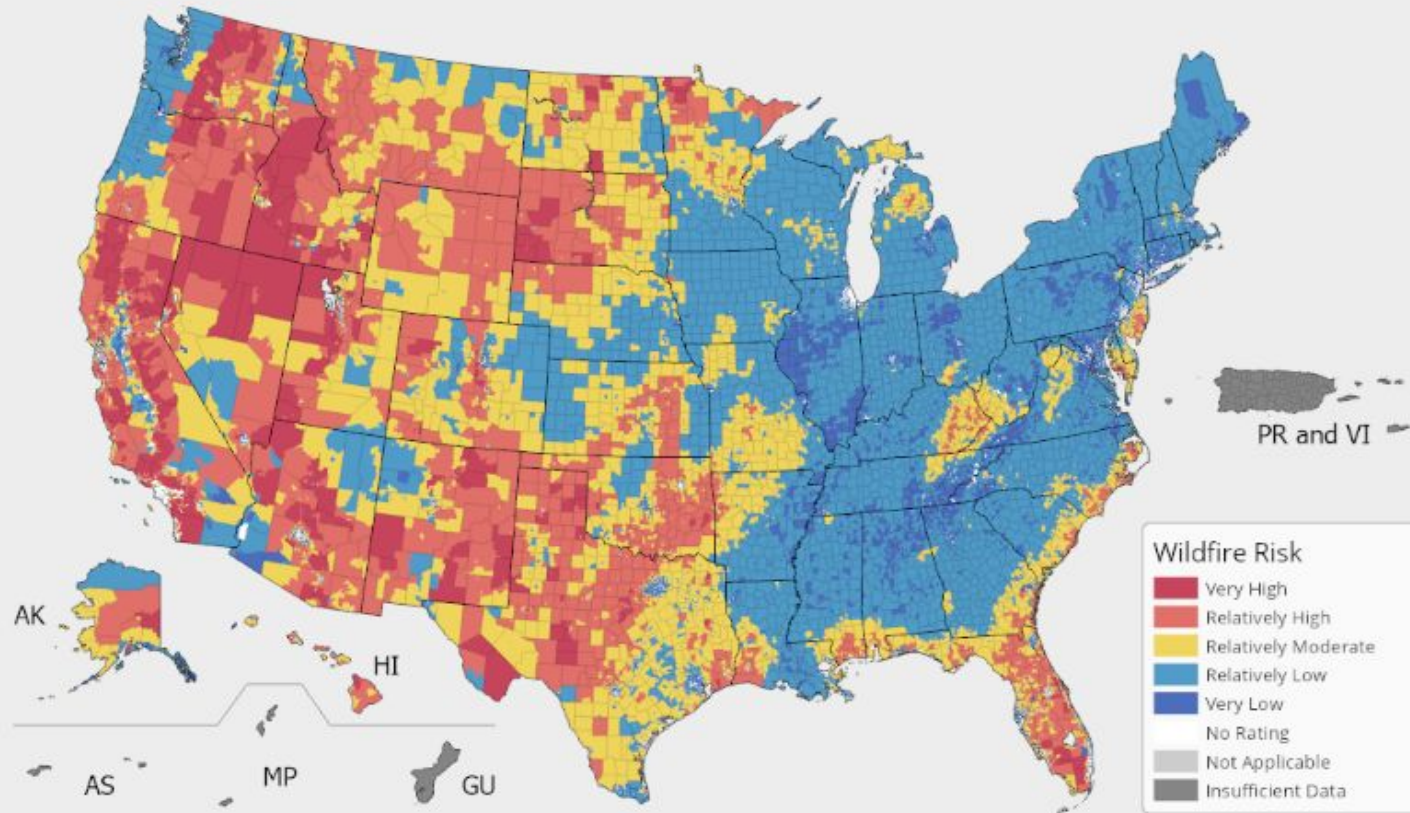
Wildland Urban Interface



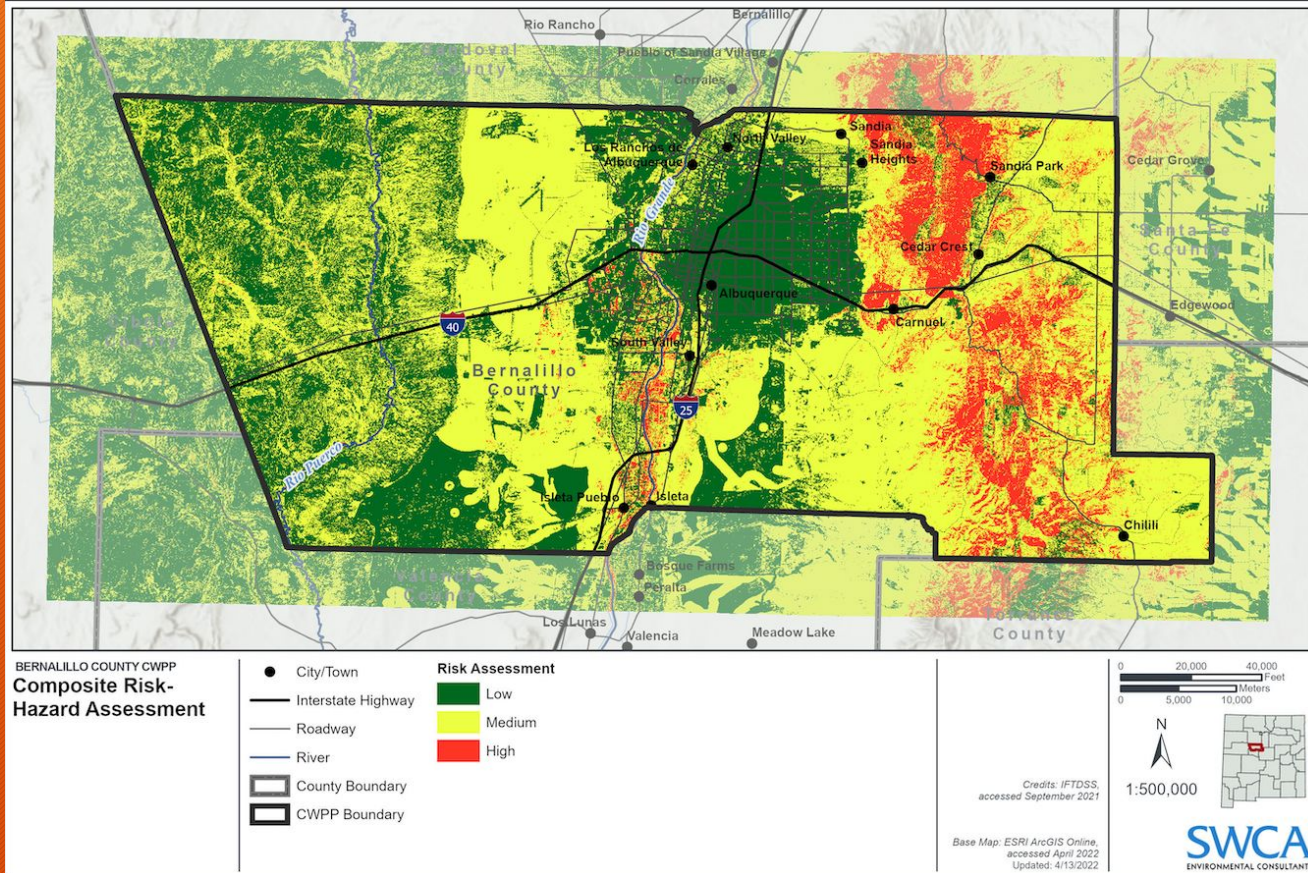
Paradise, CA 2018

- It's where we live, essentially everywhere in the East Mountains)
- Areas of increasing development in areas adjacent to or within natural or undeveloped areas
- Fire suppression and development have lead to increased risk
- **Communities can adapt!**

Wildfire Risk in the United States



Wildfire Risk in Bernalillo County



- Credit: Bernalillo County Community Wildfire Protection Plan, 2022. SWCA

How did they make that map?

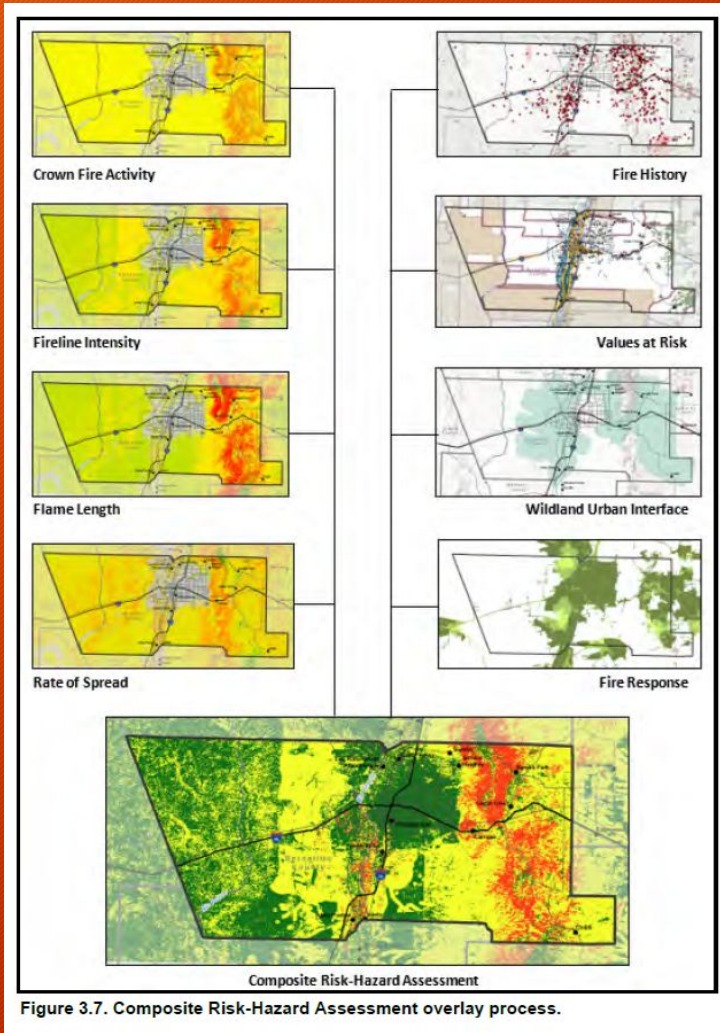
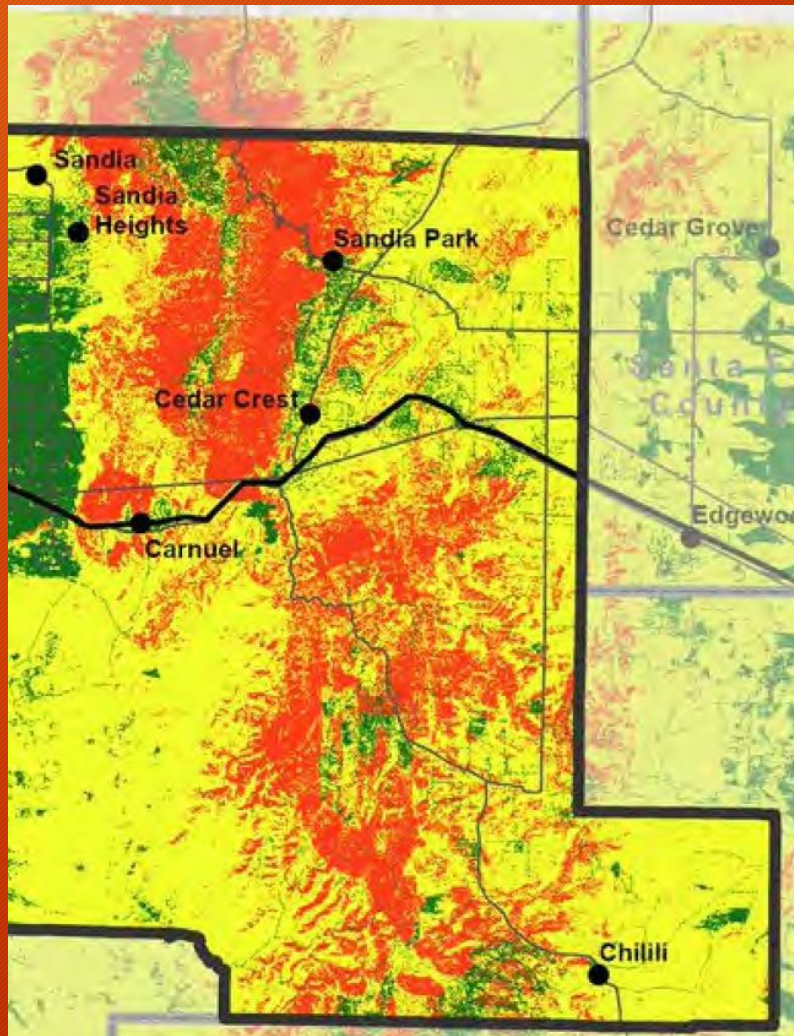
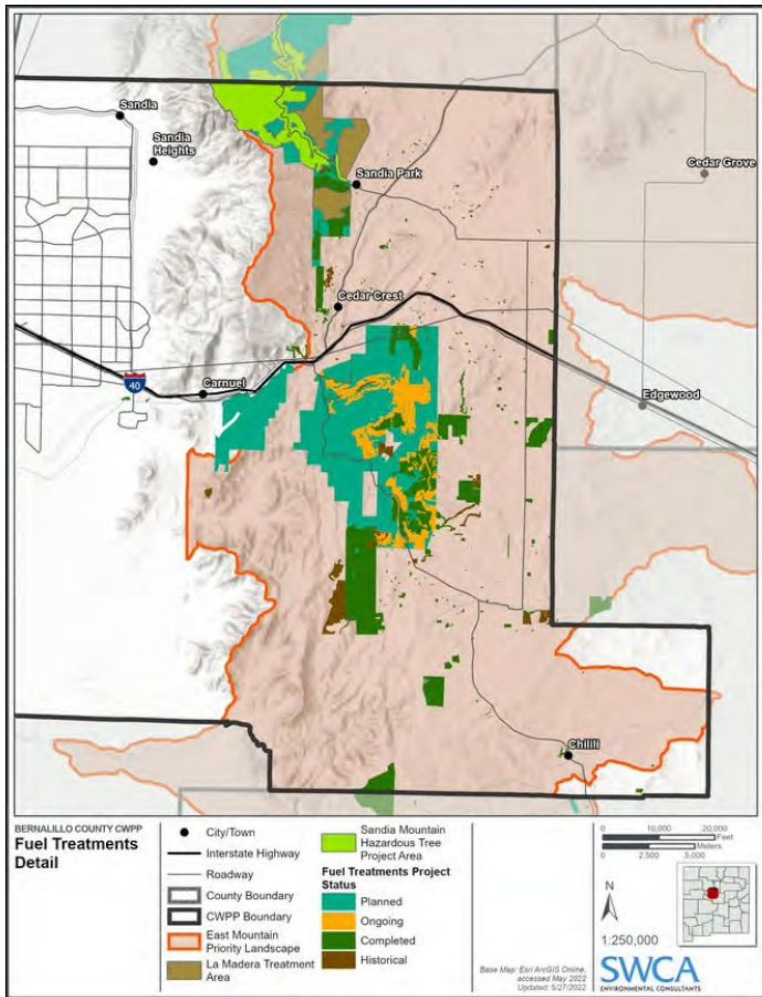


Figure 3.7. Composite Risk-Hazard Assessment overlay process.

Zoomed in to East Mountains



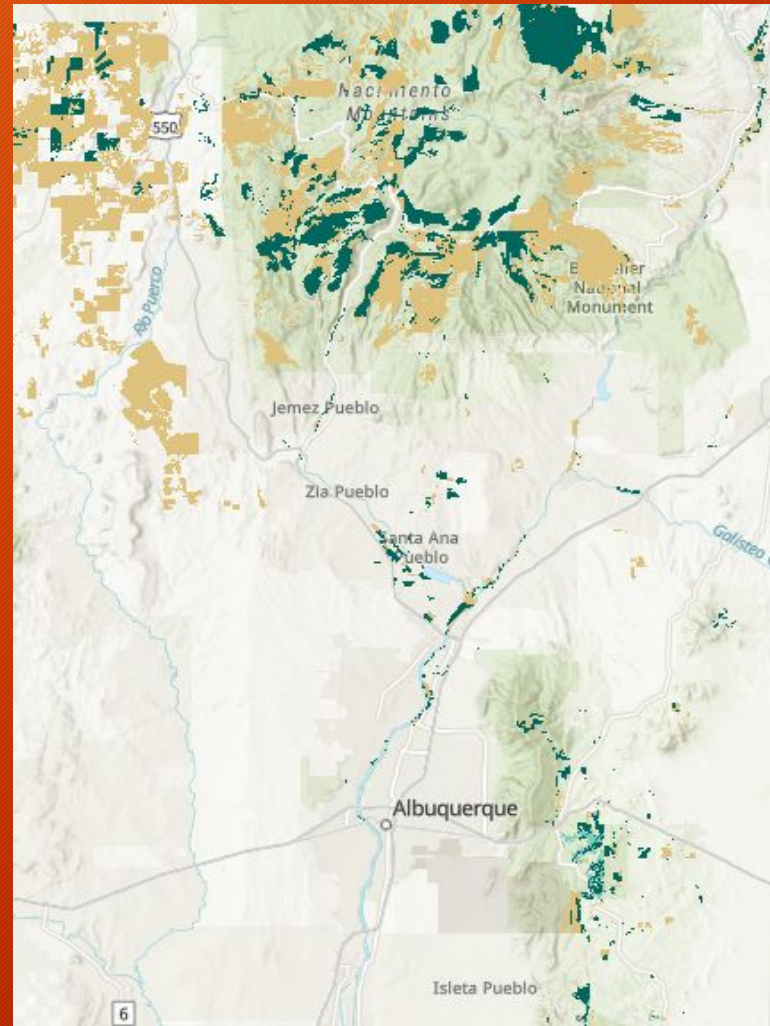


Planned, ongoing, completed, and historical fuel treatment projects in the East Mountains

Figure 4.2. Existing fuel treatments detail (zoomed in).

Zooming out:

There's a lot of work to do!



Credit: NMFWR

High Severity Wildland Fires Are Increasing

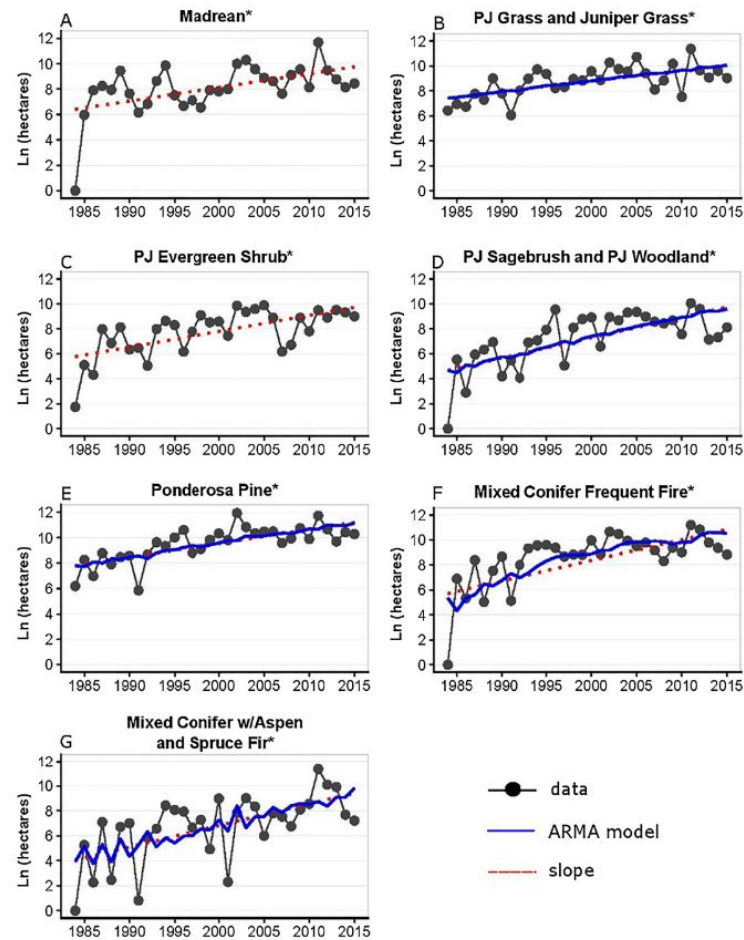
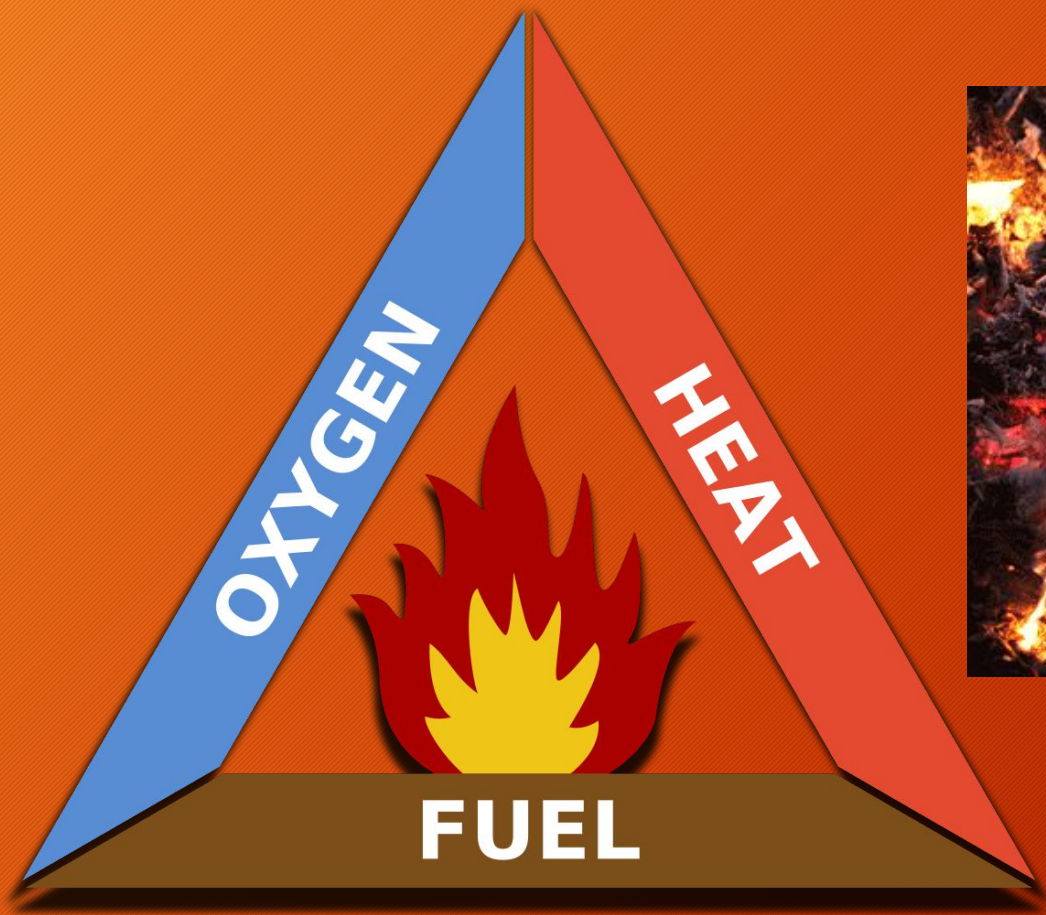


Fig. 4. Results in temporal trend analysis in area burned for each ERU Fire Regime Type from 1984 to 2015. *All trends are significantly increasing ($P \leq 0.005$).



Fire-Suppressed Forest



In a forest where fires rarely happen, fuel builds up: There's **surface fuel** (grass, logs, woody debris, brush); **ladder fuel** (shrubs, small trees, snags); and **tree crowns**.

- 1** Surface fires spread quickly through brush and woody debris.
- 2** Ladder fuels allow the fire to move up toward the forest canopy.
- 3** Tree crown fires are so intense, they're difficult to control.

Forests Where Fires Are Frequent



The greater the distance between **surface fuel** (grass, logs, twigs, fallen branches and low-lying foliage) and **tree crowns**, the more difficult it is for crown fires to start.

1 Periodic fires spread through surface fuel.

2 The surface fire cannot make the leap to the tree crowns.

3 The fire consumes small plants, but taller trees escape with scorched bark.

Home Hardening - Most critical task

- Start at your house and move towards the trees
- Raking mowing and cleaning gutters and roof, multiple times per year
- Clean out UNDER items like propane tanks, decks, steps, and loose items
- Make sure vents are adequately screened, 1/8" metal screen



Embers!

- Risk to homes is not only from surface or radiative heating
- Flammable housing materials can become risk to other houses
- ~60% of homes that ignite are due to embers



Fuel Reduction Zones

- Zone 1 - immediate area 0-5ft
 - Fire break, little to no vegetation is recommended.
 - Home hardening - mesh over vents, clean gutters, mulches kept away from structure.
- Zone 2 - Intermediate 5-30ft
 - Moderate Vegetation
 - Vertical and Horizontal Space
- Zone 3 - Transition to healthy forest areas 30-100ft
 - Ideal for wood piles, sheds, etc
 - Groups and Clumps



Ciudad Project After Defensible Space Work



Choosing when to thin

- Mid October to mid April, for forested/pine areas
- Conifer pests (bark beetle) are known to spread during warm and dry weather (April - October)
- Hold off or move daily to community chipping site or landfill
- Lower fire risk during this time of year





Equipment

- Loppers and hand saw often all you need to get started
- Many required cuts are less than 3”
- Chainsaws are helpful but not needed to make an initial impact
- Add a rake, wheelbarrow and tarp to help move pine needles out to zone 3 or beyond





Green Waste Days

- Twice a year event at the East Mountain Transfer Station
- Run for 2 weeks each Fall and Spring
- No Gate Fees for any covered loads of green waste
- Partnership with Bernalillo County with funding support from NMC Counties Association

Fall 2023

BERN CO Bernalillo County
Count on us. BERNCO.ORG

CIUDAD SOIL & WATER CONSERVATION DISTRICT

NEW MEXICO COUNTIES
33 COUNTIES

October 30 Thru November 12
8 a.m. to 4 p.m.

EAST MOUNTAIN TRANSFER STATION
711 Highway 333
Tijeras, NM

ALL LOADS MUST BE COVERED

GREEN WASTE Event

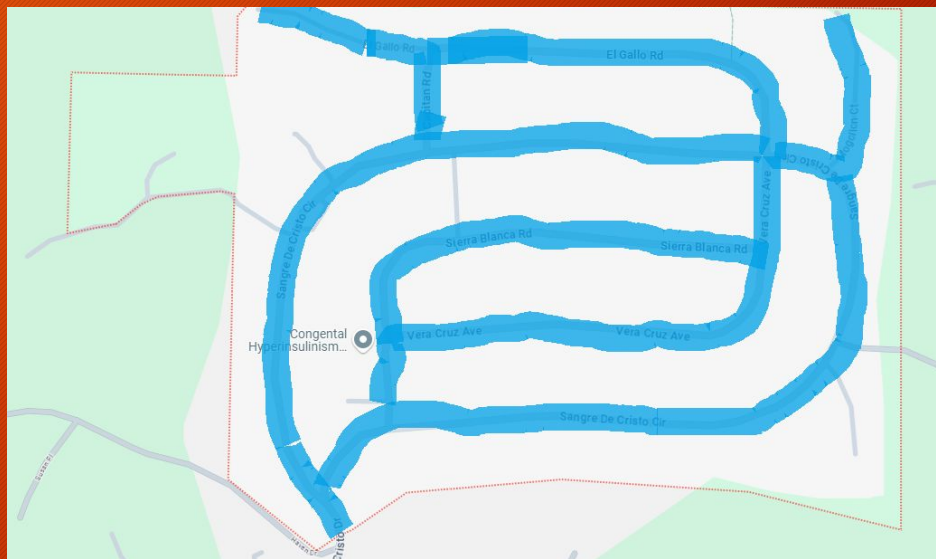
East MOUNTAIN

LANDOWNERS RECYCLE GREEN WASTE FOR FREE!

Call (505) 281-9110

BROUGHT TO YOU BY
Bernalillo County, County Commissioner Eric C. Olivas,
Ciudad Soil and Water Conservation District, and New Mexico Counties

Neighborhood Chipper Events



Defensible Space is crucial but there's much more to do!

- Pace and Scale
- Thinning achieves more than just wildfire defense
- Do what you can
- What if I'm tired? What if I'm busy? What if I have 30 acres?
- Wildfires don't care about any of that but help is available!



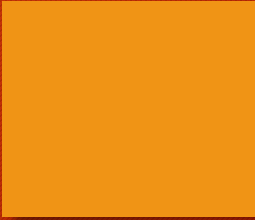
50/50 Private Land Forest Health Thinning

- 50/50 cost share on total project cost
- Professionally developed individual project plans
- Ciudad uses trained and insured contractors
- Follows NM Forestry Division approved and successful treatment protocols
- Projects can be any size but 1 acre is minimum cost









ciudadswcd.org



Contact Us

- Home
- About Us ▾
- Governance ▾
- Education & Outreach ▾
- Programs ▾
- Partnerships ▾

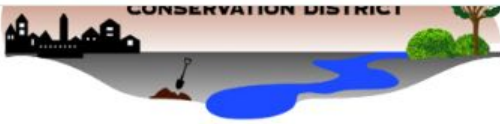
- Agriculture/Soil Health ▸
- East Mountain Forest Health and Wildfire ▸
- Watersheds/Wetlands ▸
- Urban Conservation ▸
- Invasive Species ▸
- Subdivision Reviews
- Cost Share Forest Health Thinning
- Green Waste Days
- Reflective House Numbers
- Bernalillo County CWPP
- Backyard Tree Farm Program
- Archive ▸

Candelaria Nature Preserve

www.ciudadswcd.org/east-mountain-forest-health-and-wildfire-prevention

partnered with the City of Albuquerque Open Space Division to manage and res

Join our mailing list



PROGRAMS

AGRICULTURE/SOIL
HEALTH

EAST MOUNTAIN
FOREST HEALTH AND
WILDFIRE

COST SHARE
FOREST HEALTH
THINNING

GREEN WASTE
DAYS

REFLECTIVE HOUSE
NUMBERS

BERNALILLO
COUNTY CWPP

BACKYARD TREE
FARM PROGRAM

Cost Share Forest Health Thinning

Ciudad SWCD's East Mountain Forest Health Program (EMFHP) offers technical and financial assistance to East Mountain residents for thinning of overly dense forested properties. Our program provides 50% cost share on the total project costs towards defensible space and overall forest health.

Funding is available and applications are accepted year round. Coordination and project planning takes place year round. As of 2024, on the ground work takes place between October and April. This is due to prolonged drought, bark beetle, and wildfire concerns

Check out the [Frequently Asked Questions](#) page for more information and click the link in the green box to the right to submit an application today!

For more information or a paper application, please email ricky@ciudadswcd.org.




2023 -2024 EMFHP APPLICATION

Landowners interested in participating in the East Mountain Forest Health Program should submit an application by using the form below.

[READ MORE »](#)

Join our mailing list

ciudadswcd.org



CIUDAD SOIL & WATER CONSERVATION DISTRICT

Home About Us Governance Education & Outreach Programs Partnerships

THIS ITEM APPEARS ON COST SHARE FOREST HEALTH THINNING

2023 -2024 EMFHP application

Landowners interested in participating in the East Mountain Forest Health Program should submit an application by using the form below.

There is a non-refundable fee for the Forest Health Assessment of your property. Your assessment fee can be paid by selecting the appropriate payment option on this page. **This fee is based on the size of your project:**

- For <1-5 Acres, the assessment fee is \$100.
- For 5-10 Acres \$150.
- For 10+ Acres \$200.

Alternatively, assessment fees may be paid by mailing a check made out to Ciudad SWCD. Checks should be mailed to ATTN: Ciudad EMFHP PO Box 93463, Albuquerque NM 87199. Be sure to include names and addresses that match your application if you choose this payment option.

Once Ciudad SWCD receives your assessment fee and application, a Ciudad SWCD representative will contact you to schedule your assessment.

Please Note:

In order to qualify for this program, applicants must be able to identify the boundary lines of their property. Property lines must be clearly marked at the time of assessment.

This program does not include removal of existing dead and down fuels on your property.

FOREST HEALTH ASSESSMENT FEE PAYMENT OPTION - .1 TO 5 ACRES

Landowners participating in the East Mountain Forest Health program must have their property assessed. There is a non-refundable charge for the..

[READ MORE >](#)

FOREST HEALTH ASSESSMENT FEE PAYMENT OPTION - 5 TO 10 ACRES

Landowners participating in the East Mountain Forest

My property lies off of: (required)

North 14

Name (First & Last) (required)

Physical Address (required)

Mailing Address (if different from physical address)

Geographic Location/subdivision (required)

Phone Number (required)

Email Address (required)

Total Acreage of Property: (required)

Acres in Need of Thinning (required)

Forest Type (required)

Pinon/Juniper

Prior Landowner Activity (please describe any forestry, erosion control or wildlife enhancements performed in the last five years): (required)

Signature (required)

Submit

What Ciudad SWCD is able to accomplish as a District is largely restricted to the availability and guidelines of grant funding that are awarded. Ciudad SWCD delivers numerous programs in support of our residents and our community. Donations are

FOREST HEALTH ASSESSMENT FEE PAYMENT OPTION - 10+ ACRES

Landowners participating in the East Mountain Forest Health program must have their property assessed. There is a non-refundable charge for the..

[READ MORE >](#)

EMFHP Landowner Project Process



EMFHP in a paragraph:

Trees that are dead, diseased, insect damaged and genetic defect trees will be removed first, then others until reaching the desired basal area. Thin to average of 40-60sq. ft. of BA, leave a variety of tree species, sizes and age classes, and favor leaving Ponderosa and Alligator Juniper. Remove the unhealthy trees, those showing signs of stress, disease, bug activity, mistletoe, or narrow forked ponderosa pine trees. Leave healthy trees in groups/clumps, create random openings between groups of trees. Remove ladder fuels under leave trees. Firewood to be left in piles, (no >4'x4'x4') out in the open and not within 30' of a structure. Slash will be chipped and spread to an average of 1", no >2" or within 10' of any structure. This program does not include removal of existing dead and down fuels.

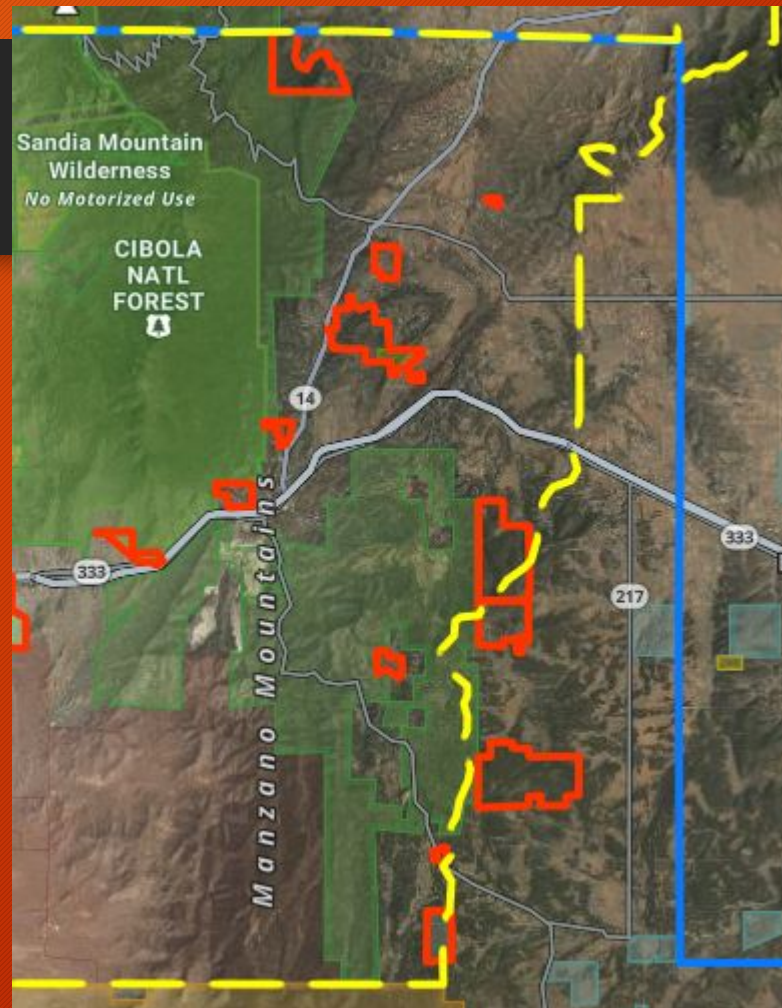
You pay ½ these rates per acre. In 2024 the average cost to Landowners was ~\$900/acre/project

Cost for Sandia and Manzanita Mountain Services			
Forest Type	Service	Rates per Acre	Steep Slope Surcharge per Acre (20%+)
PP/ MC/ PJ	Defensible Space, Heavy (>120 B.A.)	\$2,475.00	\$3,475.00
PP/ MC/ PJ	Defensible Space, Moderate (90-120 B.A.)	\$1,725.00	\$2,425.00
PP/ MC/ PJ	Defensible Space, Light (<90 B.A.)	\$1,400.00	\$1,820.00
PP/ MC	Outside Defensible Space, Heavy (>120 B.A.)	\$1,900.00	\$2,675.00
PP/ MC	Outside Defensible Space, Moderate (90-120 B.A.)	\$1,500.00	\$2,100.00
PP/MC	Outside Defensible Space, Light (<90 B.A.)	\$1,325	\$1,725
PJ	Outside Defensible Space, Heavy (>120 B.A.)	\$1,700.00	\$2,375.00
PJ	Outside Defensible Space, Moderate (90-120 B.A.)	\$1,400.00	\$1,975.00
PJ	Outside Defensible Space, Light (<90 B.A.)	\$1,200	\$1,560
PP/MC/PJ	Outside Defensible Space, Mastication	\$1,500.00	\$2,100.00
PP/MC/PJ	Chip & Haul	\$865.00	
PP/MC/PJ	Cut Stump Treatment	\$1,200.00	

Video of Private Land Project



Public Land Projects



Juan Tomas Open Space, Mastication Project



Review

- Wildfire is an increasing risk to WUI communities
- Action is necessary to prevent catastrophic wildfire spread in WUI zones like the East Mountains
- Defensible space creation is a necessary way for homeowners to take action initial action
- Home hardening greatly reduces risk to property
- Annual maintenance of forest stands is best



Thank You! Questions?

CIUDADSWCD.ORG

